

FLEX SPACE

FOLSOM



Flex Space Folsom is located at 140 Blue Ravine Road in Folsom's Lake Forest Tech Center and is Greater Sacramento's only dedicated research & development flex facility - Everything you need under one roof.

DESCRIPTION

Flexible Spaces:

No two innovations are alike, so why settle for a one-size-fits-all approach? Our customizable dedicated workspaces allow you to design the environment that fuels your creativity and productivity. From R&D, Production and Warehouse areas, to private offices and dedicated cubicles, the choice is yours.

Flexible Lease Terms:

Flexible terms and rates - Ask us about our move in specials

Flexible Growth:

As your business and projects evolve, so can your space. Our flexible leasing options allow you to scale up or down according to your needs, ensuring you never outgrow your needs.

Flexible Working Hours:

24/7 Access

Flexible Power:

The building is equipped with heavy power capable of serving many types of industrial businesses.

AMENITIES

- Shared Flex Facility
- Growing Tenant Community
- Heavy Power
- Garage Roll Up Door
- Loading Dock
- Shipping & Receiving Area
- Forklift
- Flexible Zoning
- WiFi - Fiber Available
- Conference Rooms
- Kitchen, Break Room & Lounge
- Shower & Locker Room
- 24/7 Access
- CCTV Security Camera Monitoring
- Secured Outdoor Storage (Covered)
- Ample Parking
- Outdoor Seating Areas
- Vibrant Location next to Lake Natoma with Walking & Biking Trails
- Close proximity to Restaurants, Retail and the Light Rail Station

COLE STROMBOM

650-302-3805

cole@strombom.com

LIC. #01953946

OFFICE CONTACT

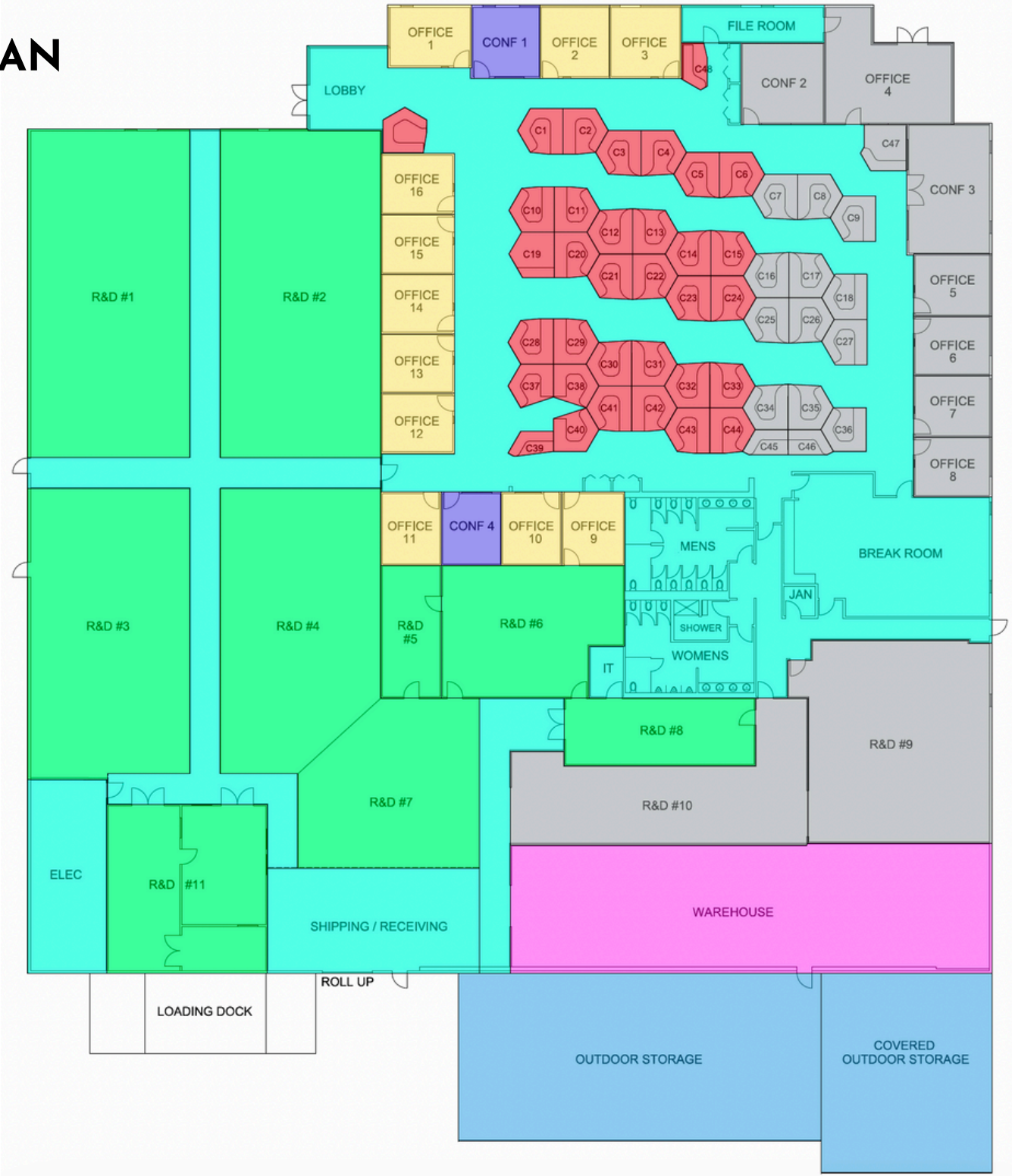
916-299-6698

www.strombom.com

LIC. #02155363



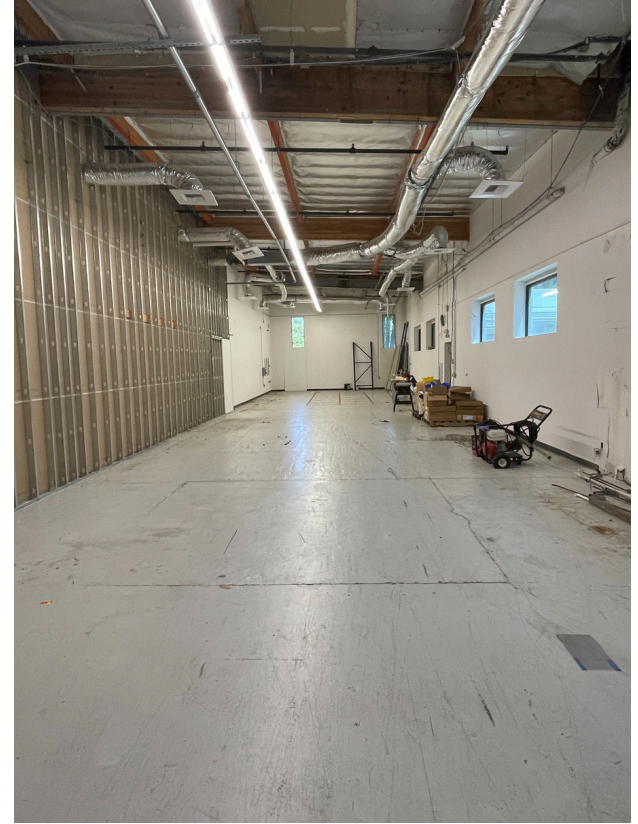
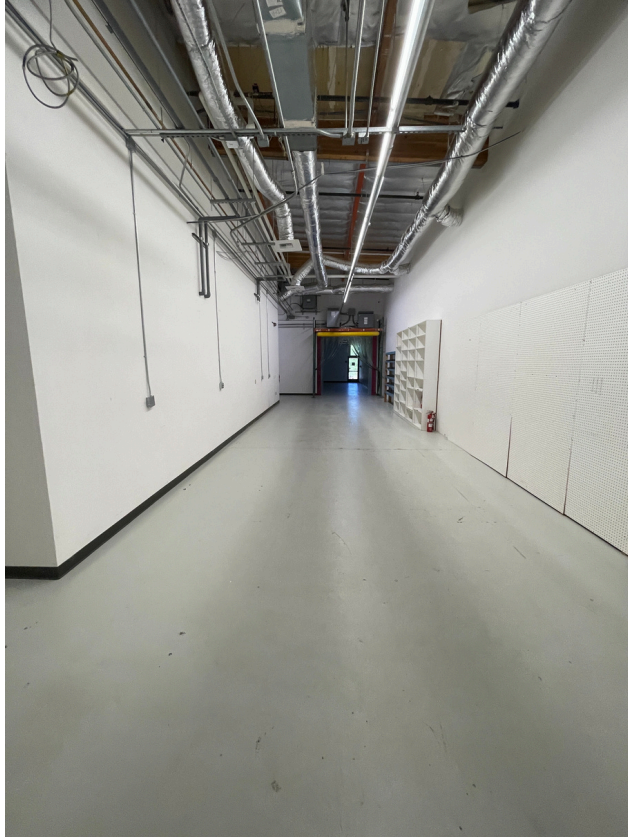
FLOOR PLAN



EXTERIOR PICTURES



R&D FLEX WAREHOUSE PICTURES



OFFICE PICTURES

